



# JIBANTALA ROKEYA MAHAVIDYALAYA

P.O. – Mallickati, P.S. – Jibantala, Pin – 743502 Dist. – South 24 Parganas

Affiliated to University of Calcutta

ESTD. : 2007

Web: www.jibantalarokeyamahavidyalaya.in Email: jmrokeya@gmail.com

President:

Saokat Molla

Principal & Secretary:


Dr. Anup Maji

Ref. No:.....

Date:

## Criterion 7 - Institutional Values and Best Practices

### 7.1.2 .The Institution has facilities and initiatives (Report of Activities :)

**JIBANTALA ROKEYA MAHAVIDYALAYA**  
P.O. – Mallickati, P.S. – Jibantala, Pin – 743502 Dist. – South 24 Parganas  
Affiliated to University of Calcutta  
ESTD. : 2007  
Web: www.jibantalarokeyamahavidyalaya.in Email: jmrokeya@gmail.com

Ref. No:..... Date: 21/12/2021

**NOTICE**

Students are directed to abide by the rules of waste disposal and help maintaining clean, green and plastic free campus.

- Waste bins are placed at different locations for proper disposal of waste.
- Green waste bins to be used for bio-degradable waste.
- Blue waste bins are to be used for non-biodegradable waste.

*Dr. Anup Maji*  
21/12/2021

Principals Mandali  
Teacher-in-Charge  
Jibantala Rokeya Mahavidyalaya  
P.O. Mallickati, P.S. Jibantala, Dist. South 24 Parganas

RKM

*Anup Maji*  
30/12/21

**Dr. Anup Maji**  
Principal  
Jibantala Rokeye Mahavidyalaya  
P.O. - Mallickati, 24 Pgs. (S)



# JIBANTALA ROKEYA MAHAVIDYALAYA

P.O. – Mallickati, P.S. – Jibantala, Pin – 743502 Dist. – South 24 Parganas

Affiliated to University of Calcutta

ESTD. : 2007

Web: [www.jibantalarokeyamahavidyalaya.in](http://www.jibantalarokeyamahavidyalaya.in) Email: [jmrokeya@gmail.com](mailto:jmrokeya@gmail.com)

President:  
Saokat Molla  
Principal & Secretary:  
Dr. Anup Maji

Ref. No:.....

Date:

## Report of activities:

The institution arranges various events and initiatives like alternate source of energy and energy conservation measures, management of the various types of degradable and non degradable waste, water conservation, green campus initiatives and disabled friendly and barrier free environment:

- Solar panel system of 335 watt, implemented for alternate source of energy.
- Power on and power off with a single switch for conservation of electricity.
- To prevent wastage of water, sensors are installed in water pumps.
- Taking initiatives to conserve rain water and utilize it appropriately.
- Setting up separate containers for degradable and non-degradable waste.
- Plantation of trees for greenery and use of awareness posters inside the campus.
- Provision of Wheelchair, Ramp and Divyangan Toilet for disabled students.

*Amir*  
30/7/24  
Dr. Anup Maji  
Principal  
Jibantala Rokeye Mahavidyalaya  
P.O. - Mallickati, 24 Pgs. (S)



# JIBANTALA ROKEYA MAHAVIDYALAYA

P.O. – Mallickati, P.S. – Jibantala, Pin – 743502 Dist. – South 24 Parganas

Affiliated to University of Calcutta

ESTD. : 2007

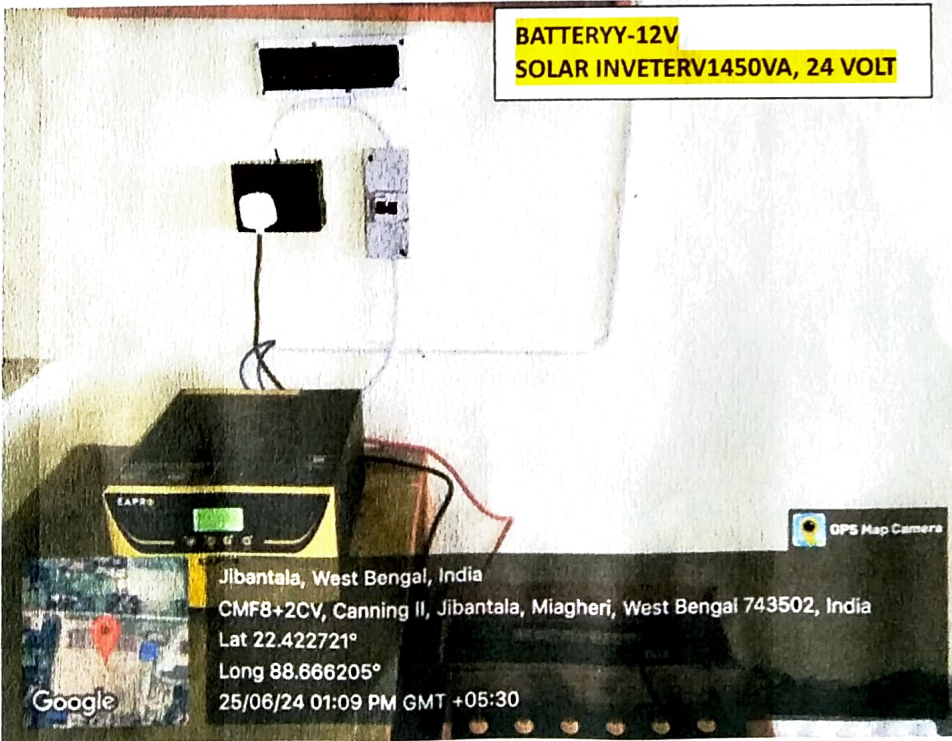
Web: [www.jibantalarokeyamahavidyalaya.in](http://www.jibantalarokeyamahavidyalaya.in) Email: [jmrokeya@gmail.com](mailto:jmrokeya@gmail.com)

President:  
Saokat Molla  
Principal & Secretary:  
Dr. Anup Maji

Ref. No:.....

Date:

## ➤ Alternate source of Energy (Solar panel system of 335 watt):



*Anup Maji*  
30/7/24  
Dr. Anup Maji  
Principal  
Jibantala Rokeye Mahavidyalaya  
P.O.- Mallickati, 24 Pgs. (S)



# JIBANTALA ROKEYA MAHAVIDYALAYA

P.O. – Mallickati, P.S. – Jibantala, Pin – 743502 Dist. – South 24 Parganas

Affiliated to University of Calcutta

ESTD. : 2007

Web: [www.jibantalarokeyamahavidyalaya.in](http://www.jibantalarokeyamahavidyalaya.in) Email: [jmrokeya@gmail.com](mailto:jmrokeya@gmail.com)

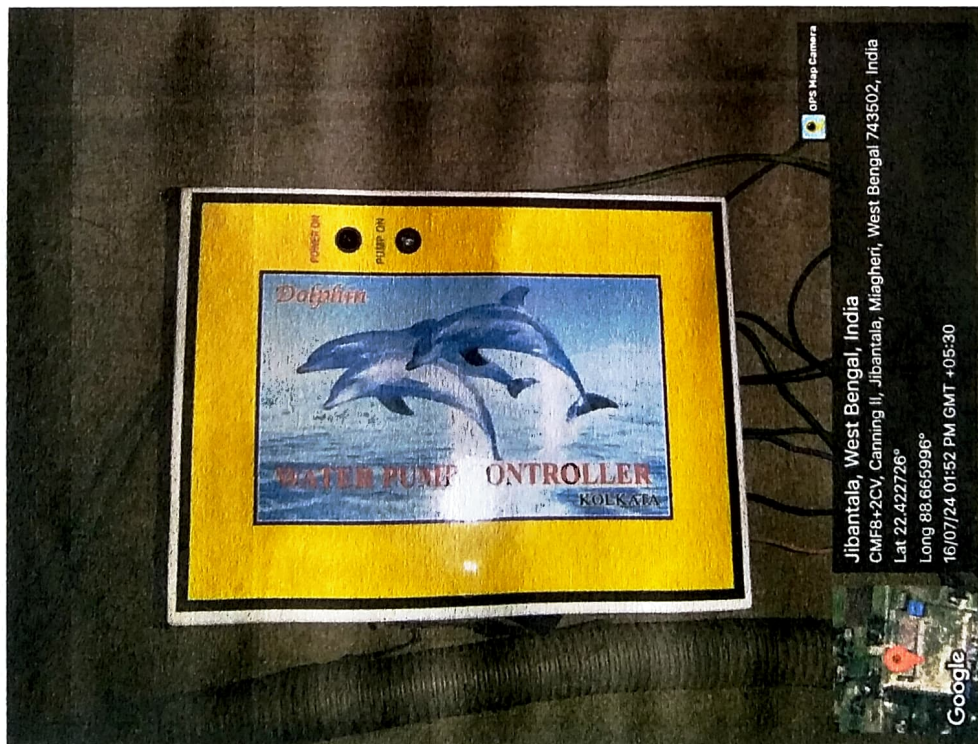
President:  
**Saokat Molla**  
Principal & Secretary:  
**Dr. Anup Maji**

Ref. No:.....

Date:



## ➤ Power Conservation: Sensor (Auto Off Pump)



*Anup Maji*  
30/7/24  
**Dr. Anup Maji**  
Principal  
Jibantala Rokeye Mahavidyalaya  
P.O.- Mallickati, 24 Pgs. (S)



# JIBANTALA ROKEYA MAHAVIDYALAYA

P.O. – Mallickati, P.S. – Jibantala, Pin – 743502 Dist. – South 24 Parganas

Affiliated to University of Calcutta

ESTD. : 2007

Web: [www.jibantalarokeyamahavidyalaya.in](http://www.jibantalarokeyamahavidyalaya.in) Email: [jmrokeya@gmail.com](mailto:jmrokeya@gmail.com)

President:  
Saokat Molla  
Principal & Secretary:  
Dr. Anup Maji

Ref. No:.....

Date:

## ➤ Rain Water Harvesting



*Dr. Anup Maji*  
30/7/24

**Dr. Anup Maji**  
Principal  
Jibantala Rokeya Mahavidyalaya  
P.O. Mallickati, 24 Pgs. (S)



# JIBANTALA ROKEYA MAHAVIDYALAYA

P.O. – Mallickati, P.S. – Jibantala, Pin – 743502 Dist. – South 24 Parganas

Affiliated to University of Calcutta

ESTD. : 2007

Web: [www.jibantalarokeyamahavidyalaya.in](http://www.jibantalarokeyamahavidyalaya.in) Email: [jmrokeya@gmail.com](mailto:jmrokeya@gmail.com)

President:

**Saokat Molla**

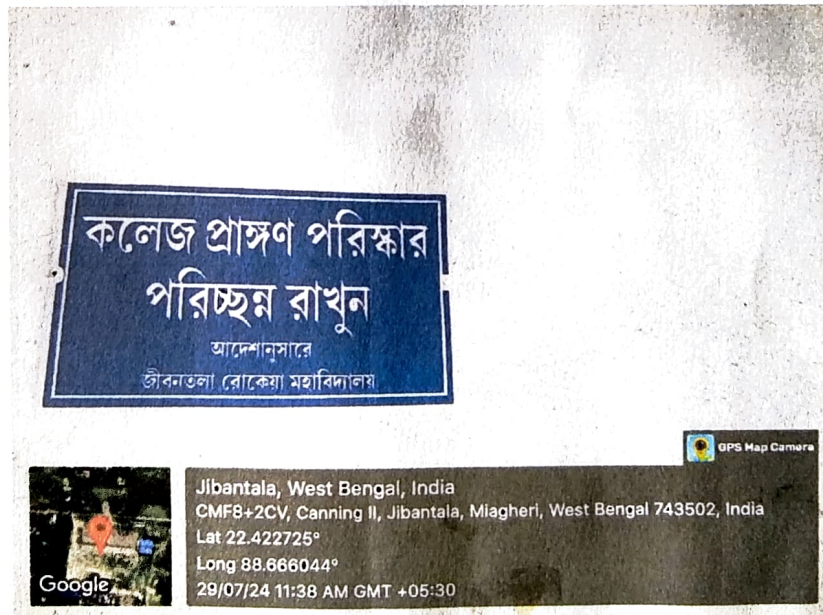
Principal & Secretary:

**Dr. Anup Maji**

Ref. No:.....

Date:

➤ Plastic Free Zone:



*Anup Maji*  
30/07/24  
Dr. Anup Maji  
Principal  
Jibantala Rokeya Mahavidyalaya  
P.O. Mallickati, 24 Pgs. (S)



# JIBANTALA ROKEYA MAHAVIDYALAYA

P.O. – Mallickati, P.S. – Jibantala, Pin – 743502 Dist. – South 24 Parganas

Affiliated to University of Calcutta

ESTD. : 2007

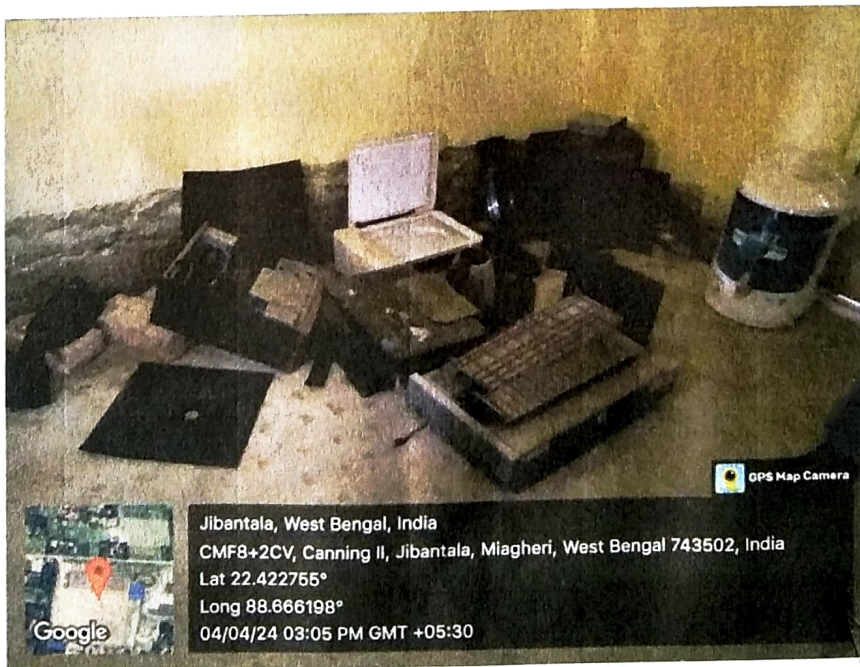
Web: [www.jibantalarokeyamahavidyalaya.in](http://www.jibantalarokeyamahavidyalaya.in) Email: [jmrokeya@gmail.com](mailto:jmrokeya@gmail.com)

President:  
**Saokat Molla**  
Principal & Secretary:  
**Dr. Anup Maji**

Ref. No:.....

Date:

## ➤ Waste Management:



Jibantala, West Bengal, India  
CMF8+2CV, Canning II, Jibantala, Miagheri, West Bengal 743502, India  
Lat 22.422755°  
Long 88.666198°  
04/04/24 03:05 PM GMT +05:30

*Anup Maji*  
30/1/24

**Dr. Anup Maji**  
Principal  
Jibantala Rokeya Mahavidyalaya  
Mallickati, 24 Pgs. (S)



# JIBANTALA ROKEYA MAHAVIDYALAYA

P.O. – Mallickati, P.S. – Jibantala, Pin – 743502 Dist. – South 24 Parganas

Affiliated to University of Calcutta

ESTD. : 2007

Web: [www.jibantalarokeyamahavidyalaya.in](http://www.jibantalarokeyamahavidyalaya.in) Email: [jmrokeya@gmail.com](mailto:jmrokeya@gmail.com)

President:  
Saokat Molla  
Principal & Secretary:  
Dr. Anup Maji

Ref. No:.....

Date:

## ➤ Divyanggan Toilet:



*Anup Maji*  
30/7/24

**Dr. Anup Maji**  
Principal  
Jibantala Rokeya Mahavidyalaya  
P.O.-Mallickati, 24 Pgs. (SH)





# JIBANTALA ROKEYA MAHAVIDYALAYA

P.O. – Mallickati, P.S. – Jibantala, Pin – 743502 Dist. – South 24 Parganas  
Affiliated to University of Calcutta  
ESTD. : 2007

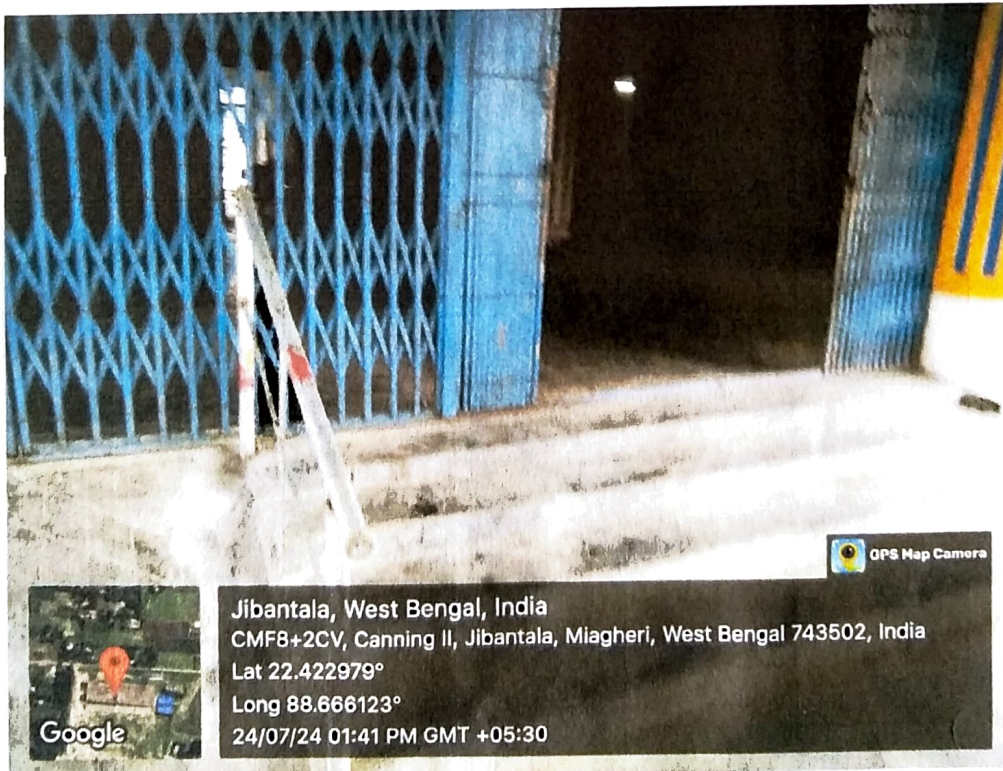
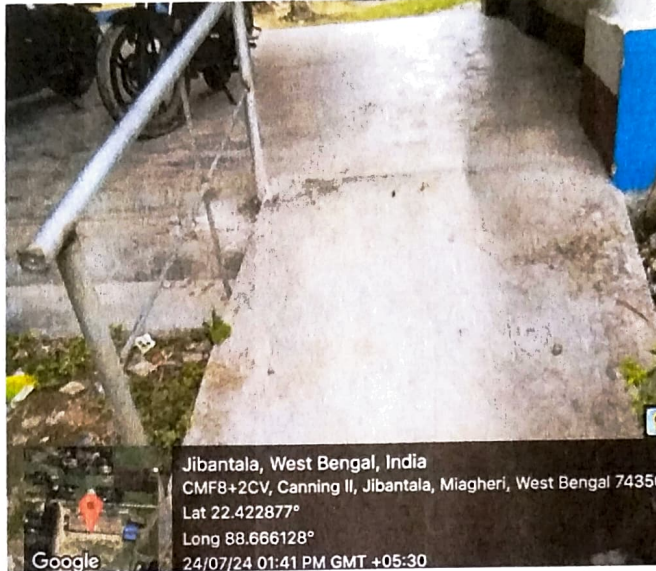
Web: [www.jibantalarokeyamahavidyalaya.in](http://www.jibantalarokeyamahavidyalaya.in) Email: [jmrokeya@gmail.com](mailto:jmrokeya@gmail.com)

President:  
**Saokat Molla**  
Principal & Secretary:  
**Dr. Anup Maji**

Ref. No:.....

Date:

## ➤ Disabled Friendly Campus:



*Anup Maji*  
30/7/24  
**Dr. Anup Maji**  
Principal  
Jibantala Rokeya Mahavidyalaya  
P.O.-Mallickati, 24 Pgs. (S)